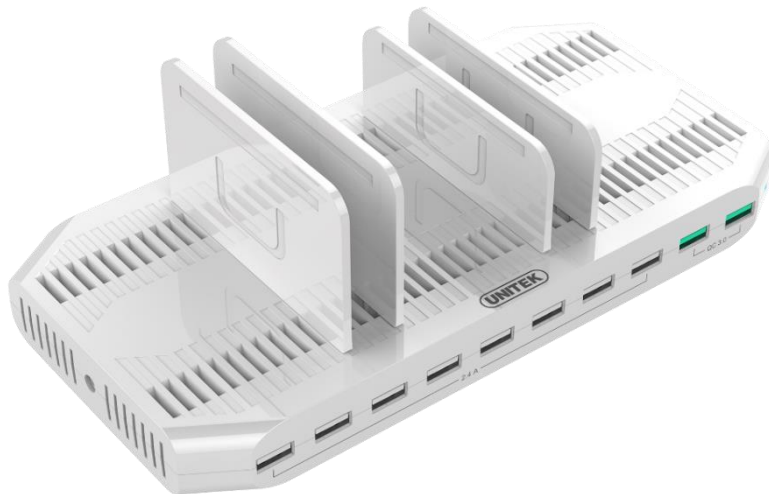


Y-2190A

96W 10-Port USB Smart Charging Station

(with 2-Port QC3.0)



Features:

- Rapid charging with BC1.2 technology, power output up to 2.4A.
- Innovative design for space saving, put your devices on top of charging station when charging.
- The adjustable separator allows you to adjust the width needed for different devices.
- Protection against over-charging, over-voltage, over-heating and short circuit.
- Solid and stable base, it can support up to 10 devices.
- 2 charging ports with Qualcomm® Quick Charge 3.0, which allows certain Qualcomm® Snapdragon™ based devices charge up to 4 times faster than devices that use conventional charging methods.
- Qualcomm® Quick Charge 3.0 is backward compatible with Quick Charge 2.0.

Power Output of Quick Charge:

QC v2.0	5V/3A or 9V/2A or 12V/1.5A
QC v3.0	3.6V~6.5V/3A or 6.5V~9V/2A or 9V~12V/1.5A



Enrich Your Life

Specifications:

Product Dimension	238 x 118 x 26 (mm)
Color	White
Downstream	10 x USB Type-A Female
Power	12V8A / 96W
Power Cable	1M
DC Dimension	5.5 x 3.5 (mm)

Package Contents:

- 1 x 96W 10-Port USB Smart Charging Station
- 1 x Power Adaptor
- 1 x User Manual
- 11 x Separator Slat (5pcs high; 6pcs short)

Packaging: UNITEK Gift Box

