

EARTHED 3-POLE ADAPTER

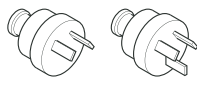
WORLD TO EUROPE

POWER ALL YOUR DEVICES

INPUT

PATENTED SAFETY MECHANISM

AUSTRALIA/CHINA



2-POLE

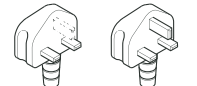
3-POLE

BRAZIL



3-POLE

UK



2-POLE

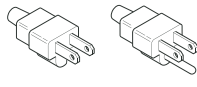
3-POLE

CH



3-POLE

USA



2-POLE

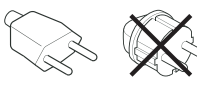
3-POLE

ITALY



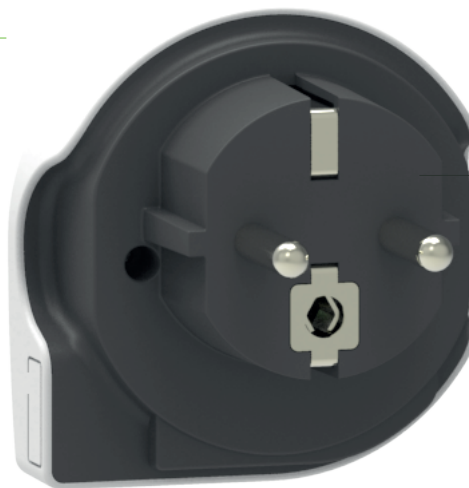
3-POLE

EUROPE



2-POLE

3-POLE



OUTPUT

PLUG STANDARD F



Mainly countries in continental Europe, in total over 110, have the socket standard that accepts the 3-pole Europe (Schuko) plug, which is the plug standard F.



FURTHER SPECIFICATIONS

Safety approved (IEC 60884, LVD EN 60950)
Suitable for earthed and unearthed plugs

Input voltage: 100V - 250V
Max. load: 16A
Power rating:
100V - 1600W/250V - 4000W

WEIGHT & DIMENSIONS

Product: 62 g / L 60 W 60 H 60 mm
Packaging: 97 g / L 80 W 66 H 110 mm

PACKAGING UNIT

Master: 20
Dimensions master: L 425 W 145 H 245 mm
2560 pcs per pallet

Made in China

PRODUCT	ARTICLE-NO.	EAN-CODE
World to Europe	1.100100	7640167560011